

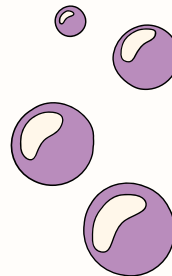
# EVERY BUBBLER C.A.R.E.S.

W . G . R I C E E L E M E N T A R Y






## WHAT IS C.A.R.E.S.?

C-cooperation  
A-accountability  
R-respect  
E-empathy  
S-self-control



## WHAT IS MY ROLE AT HOME?

-  Ask your student about Every Bubbler CARES.
-  Check in daily to see how many tickets your child earned.
-  Reinforce expectations at home for school.



## BACK TO SCHOOL GOALS

Understand what CARES looks like in the building.



## EBC EVENTS

MONTHLY ASSEMBLY

WEEKLY REWARDS

POSITIVE  
REINFORCEMENTS

## “EVERY BUBBLER CARES” BEHAVIOR MATRIX

	ARRIVAL/ DISMISSAL	CLASSROOM	BATHROOM	HALLWAY	CAFETERIA	BUS	RECESS
COOPERATION	-Follow adult directions -Share a group space safely	-Listening to others -Sharing materials and space	-Wait your turn -When your classroom has a group break, use the bathroom at that time	-Move quietly -Stay in a single file line on the right side of the hall	-Three students on each bench -Follow directions of cafeteria workers	-Follow the bus driver's rules	-Share equipment -Take turns
ACCOUNTABILITY	-Listening for your bus number to dismiss	-Bring everything you need for school or homework	-Flush -Throw trash away -Wash hands	-Be ready to follow hallway rules	-Bring lunch card/lunch box to cafeteria -Clean up trash at table	-Follow bus rules -Be packed and ready for bus	-Follow adult directions -Put away all equipment -Line up when whistle blows
RESPECT	-Quiet speaking voices with others	-Follow the teacher's directions	-Allow privacy by staying in your stall	-Keep your place in line -Safe body space in line	-Keep cafeteria clean	-Hands and feet to self -Take care of bus seat and area	-Take care of equipment -Share the space with others
EMPATHY	-Use kind words to others, saying "Good morning" or "Good-bye"	-Help classmates - Quiet voices when others are talking	-Report problems to adults	-Silent in hallway so others are ready to learn	-Include classmates at your table -Eat your own lunch -Use kind words with classmates	-Report problems to the bus driver -Talk kindly to others	-Play with students sitting on the buddy bench -Report problems to teacher
SELF-CONTROL	-Walk to and from the entrance and classrooms	-Stop, Think, and Act before making the best choice	-Use inside voice -Use toilets and sinks safely	-Keep hands to self -Walking feet	-Use inside voices at table -Zero talking when in line	-Stay seated -Inside talking voice with others	-Play safely with others